



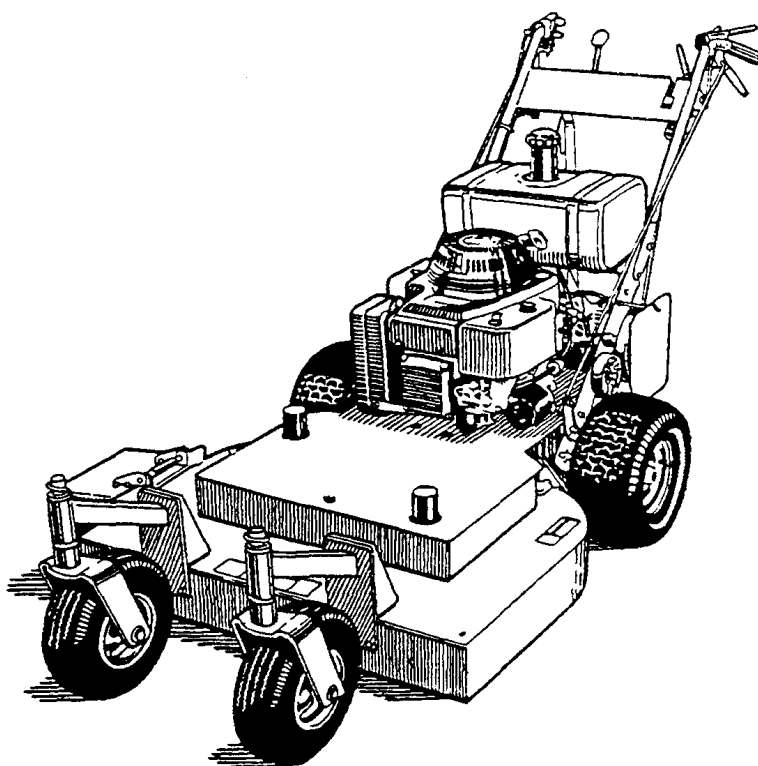
TURF EQUIPMENT

OLD STYLE
w/ 13" Rear Wheel

GEAR DRIVE

36", 48", and 52"

MID SIZE WALK-BEHIND MOWERS



PARTS MANUAL

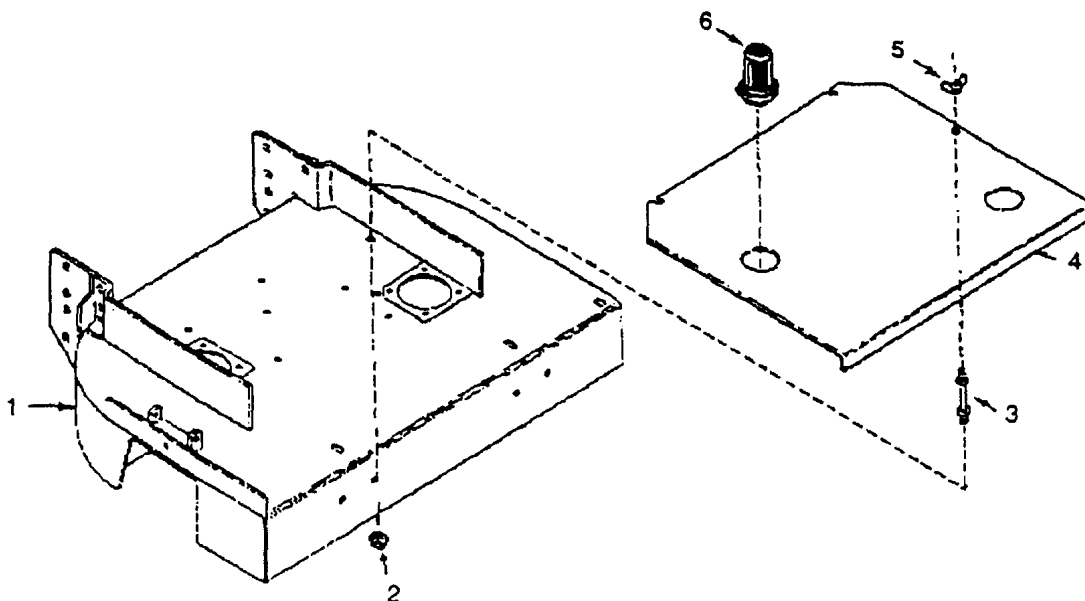
(Revised 12/15/94. For Models Beginning With The Below Listed Serial Numbers)

BG36-14KAW (Ser. No. XBG3664156), BG36-14KOH (Ser. No. XBG361241)
BG48-14KAW (Ser. No. XBG4864143), BG48-14KOH (Ser. No. XBG481268)
BG52-14KAW (Ser. No. XBG526451), BG52-14KOH (Ser. No. XBG521225)

TABLE OF CONTENTS

36" Main Frame and Hood	Page 4.
48" & 52" Main Frame and Hood	Page 4.
Handle Assembly	Page 5.
Rear Deck Components	Page 6.
Transmission Shift System	Page 7.
36" Blade Belt Drive System	Page 8.
48" & 52" Blade Belt Drive System	Page 9.
Quick Adjust Front Caster Assembly	Page 10.
Cutter Housing Assembly	Page 10.
Chute Deflector Assembly	Page 10.
Fuel Tank Assembly	Page 11.
Rear Wheel	Page 11.
Transmission	Page 12 & 13
Decal Kits	Page 14.

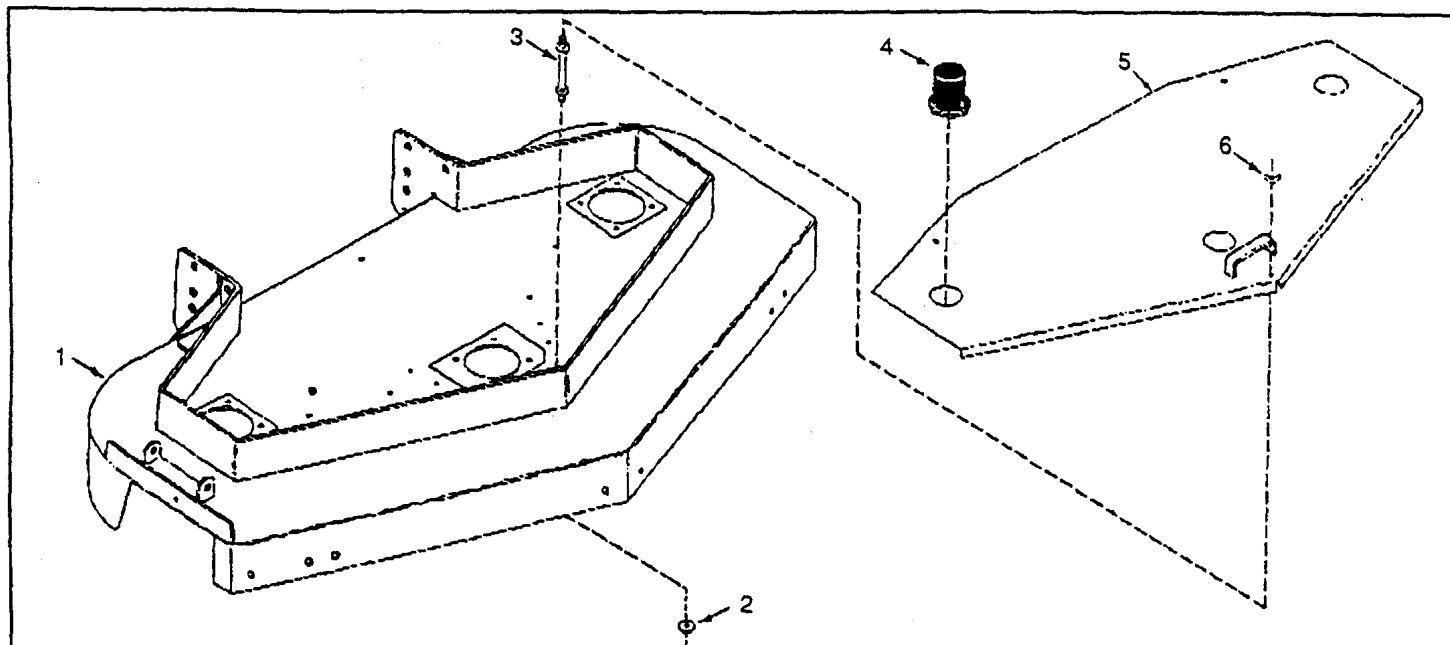
36" MAIN FRAME & HOOD



Ref. No.	Part No.	Description	No. Req'd
1	PL6127AW	Cutting Deck, 36" W/Decals	1
2	Z30003	5/16" - 16 Flange nut	4
3	PL8053	Stud, Hood Mount	2

Ref. No.	Part No.	Description	No. Req'd
4	PL4718AW	Belt Cover, 36" W/Decals	1
5	PL8060	Wing Nut	2
6	PL0738	Spindle Guard	2

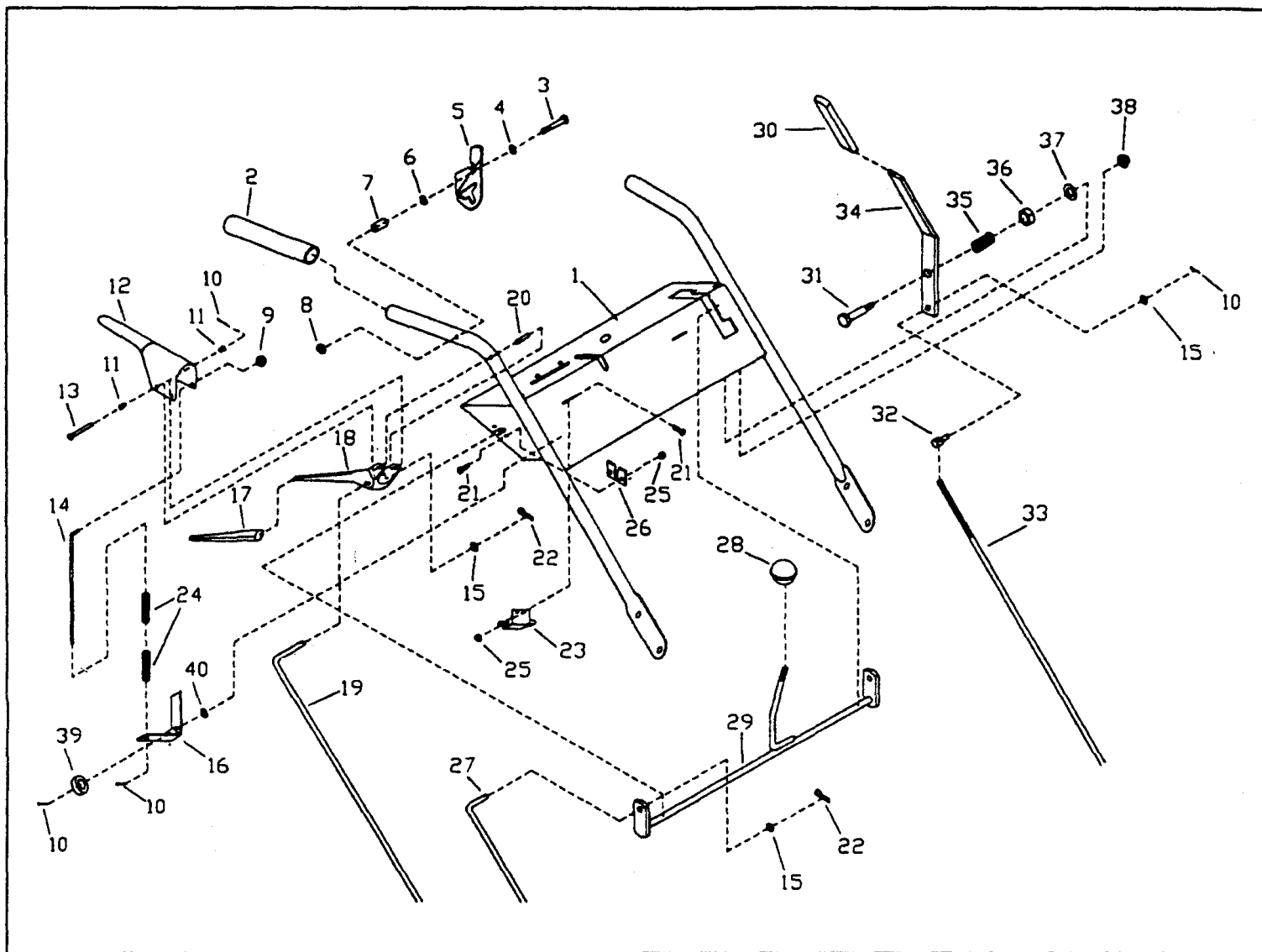
48" & 52" MAIN FRAME & HOOD



Ref. No.	Part No.	Description	No. Req'd
1	PL6120AW	Cutting Deck, 48" W/Decals	1
1	PL6121AW	Cutting Deck, 52" W/Decals	1
2	Z30003	5/16" - 18 Flange Nut	6
3	PL8053	Stud, Hood Mount	3
4	PL0738	Spindle Guard	3
5	PL6102AW	Belt Cover, 48" W/Decal	1
1	PL6103AW	Belt Cover, 52" W/Decal	1

Ref. No.	Part No.	Description	No. Req'd
6	PL8060	Wing Nut	3

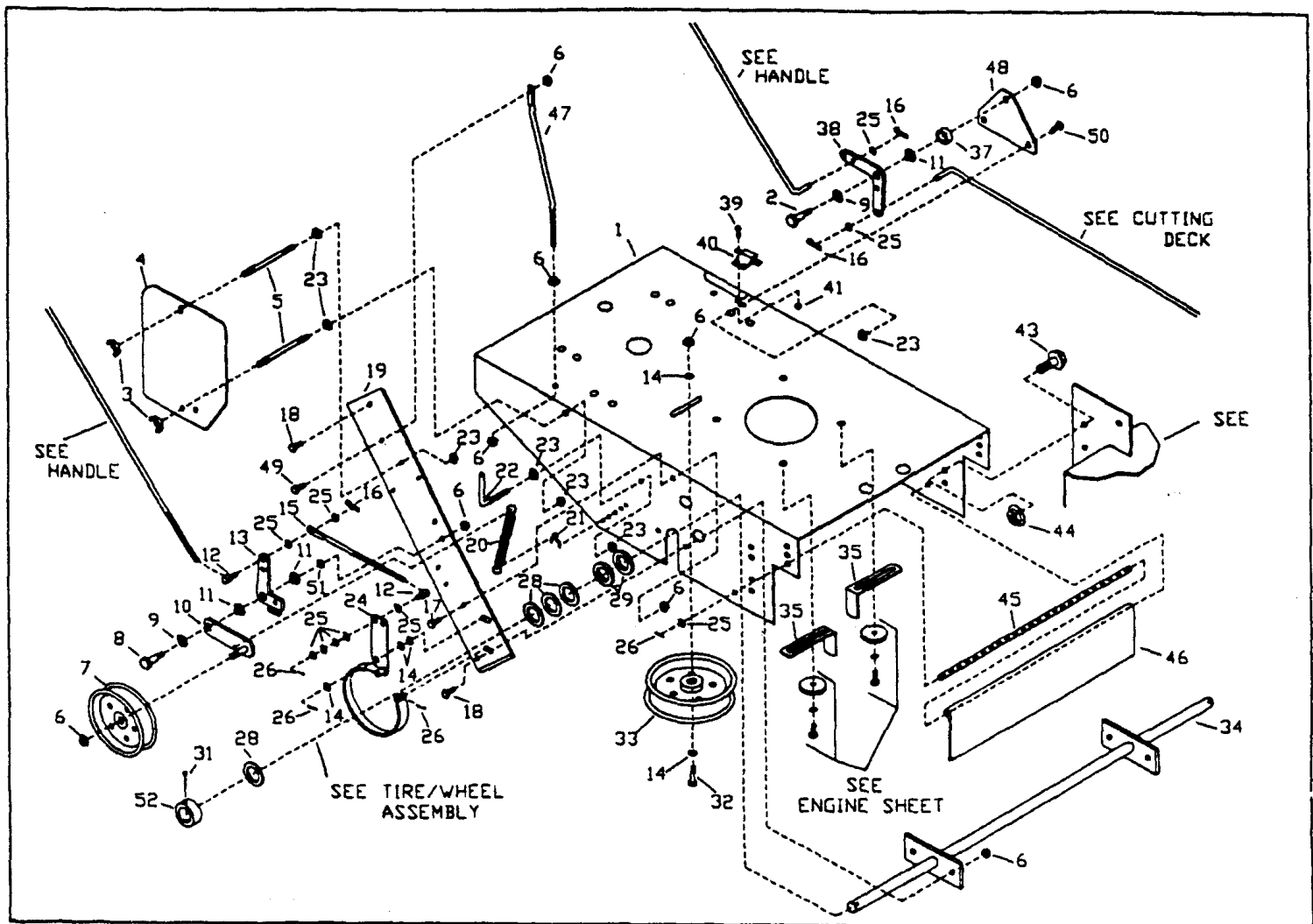
HANDLE ASSEMBLY



Ref. No.	Part No.	Description	No. Req'd
1	PL4880W	Top Handle	1
2	PL5029	Handle Grip	2
3	Z14014	1/4" - 20 x 2" Hex. Hd. Cap Screw	2
4	P0336	Wave Washer	2
5	PL8678AR	Traction Lock, Right	1
	PL8679AL	Traction Lock, Left	1
6	Z34002	1/4" Flat Washer	2
7	PL5016	Spacer	2
8	Z71101	1/4" - 20 Lock Nut	2
9	PL4593	Push-On Fastener	2
10	Z50001	Cotter Pin	7
11	PL5014	Delrin Bushing	4
12	PL5004A	Presence Lever	2
13	PL5027	Clevis Pin	2
14	PL4881	Rod, Presence	2
15	Z34003	5/16" Flat Washer	5
16	PL4884W	Bellcrank, Presence	2
17	PL0459	Grip	2
18	PL4094	Traction Lever	2
19	PL4916	Traction Control Rod	2
20	Z47017	Roll Pin	2
21	Z11003	#10 - 24 x 5/8" Pan Hd. Mach. Screw	8
22	Z49001	Hair Pin #13	4
23	PL4518	Presence Switch	2

Ref. No.	Part No.	Description	No. Req'd
24	PL8014	Spring	4
25	Z30001	#10 - 24 Lock Washer & Nut	8
26	PL4751	Retainer	2
27	PL6089	Reverse Rod	2
28	PL5001	Knob	1
29	PL4885W	Reverse Lever	1
30	PG771	Grip	1
31	PC007	Shoulder Bolt	1
32	PL0355	Swivel	1
33	PJ5775	Blade Control Rod	1
34	PL4713	Blade Engagement Lever	1
35	PET078	Spring	1
36	PL5008	Spacer	1
37	Z35006	1/2" Machinery Bushing	1
38	Z30004	3/8" - 16 Flange Nut	1
39	PL0400	Spacer	2
40	Z34004	3/8" Washer Flat	2

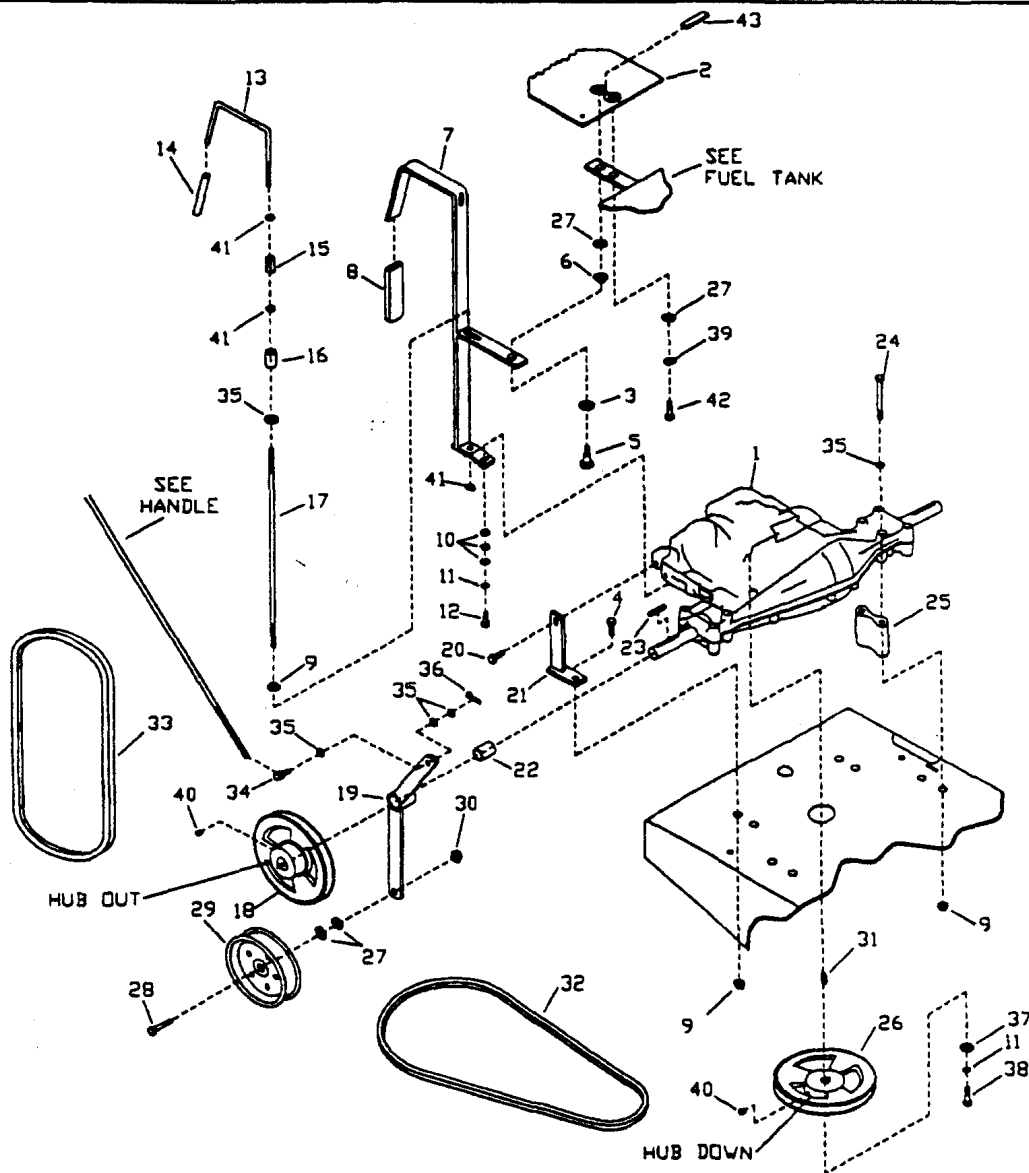
REAR POWER DECK



Ref. No.	Part No.	Description	No. Req'd
1	PL4886W	Rear Power Deck	1
2	PL4507	Shoulder Bolt	1
3	PL8060	Wing Nut	4
4	PL4906	Traction Guard	2
5	PL8053	Stud, Traction Guard	4
6	Z30004	3/8" - 16 Flange Nut	20
7	PH1139	Idler, Top Pulley	2
8	PL4897	Shoulder Bolt	2
9	PL5031	Belleville Disc Washer	3
10	PL4894WR	Floating Bellcrank, Right	1
	PL4893WL	Floating Bellcrank, Left	1
11	PL5023	Snap-In Bushing	5
12	PL0355	Swivel	4
13	PL4896WR	Pull Bellcrank, Right	1
	PL4895WL	Pull Bellcrank, Left	1
14	Z34004	3/8" Flat Washer	8
15	PL1035	Brake Rod	2
16	Z49001	Hairpin Clip	4
17	Z24004	3/8" - 16 x 3/4" Hex. Hd. Cap Screw	4
18	Z24006	3/8" - 16 x 1" Hex. Hd. Cap Screw	4
19	PL4888WR	Lower Handle, Right	1
	PL4887WL	Lower handle, Left	1
20	PL8101	Spring	2
21	PL0032	Clip	2
22	PL1124	Scraper	2
23	Z30003	5/16" - 18 Flange Nut	13
24	PL8042WR	Brake, Traction Wheel, Right	1
	PL8041WL	Brake, Traction Wheel, Left	1

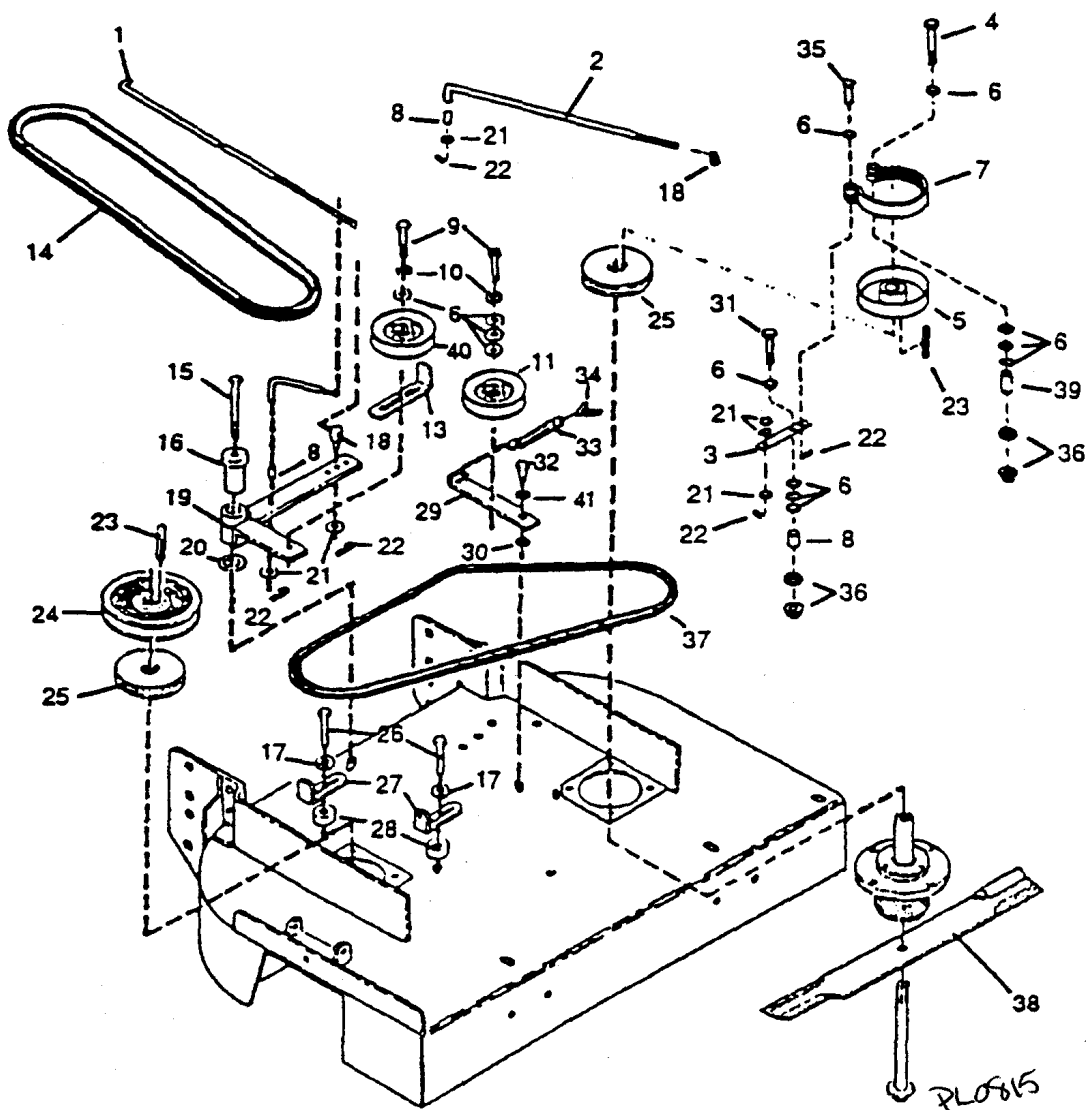
Ref. No.	Part No.	Description	No. Req'd
25	Z34003	5/16" Flat Washer	18
26	Z50001	3/32" x 1/2" Cotter Pin	8
28	Z35012	7/8" Machinery Bushing	8
29	Z34012	7/8" Flat Washer	4
31	Z51027	3/16" x 1-1/2" Cotter Pin	2
32	Z24012	3/8" - 16 x 1-3/4" Hex. Hd. Cap Screw	1
33	PL8036A	Idler, Transmission Belt	1
34	PL4708W	Axle	1
35	PL1125	Belt Guide	2
37	PL5008	Shoulder Spacer	1
38	PH1059	Bellcrank, 90° Legs	1
39	Z11003	#10 - 24 x 5/8" Pan Hd. Cap Screw	2
40	PL4518	Interlock Switch	1
41	Z30001	Keeps Nut	2
43	Z62006	1/2" - 13 x 1" Hex. Hd. Cap Screw	6
44	Z30006	1/2" - 13 Flange Nut	6
45	PL5018	Safety Flap Rod	1
46	PL5017	Safety Flap	1
47	PL0445	Support Rod	2
48	PL4705	Bracket, Blade Engage Bellcrank	1
49	Z24008	3/8" - 16 x 1-1/4" Hex. Hd. Cap Screw	2
50	Z19004	5/16" - 18 x 3/4" Hex. Hd. Cap Screw	1
51	Z36003	3/8" Hardened Washer	2
52	PL1157	Axle Collar	2

TRANSMISSION SHIFT SYSTEM



Ref. No.	Part No.	Description	No. Req'd	Ref. No.	Part No.	Description	No. Req'd
1	PL4890	Transmission, w/Reverse Gear	1	23	PL4914	Key, 3/16"	2
2	PL4907W	Shift Plate	1	24	Z19038	5/16" - 18 x 5" Hex. Hd. Cap Screw	4
3	PL5031	Belleville Disc Washer	1	25	PL8019	Transmission Mounting Spacer	2
4	Z19004	5/16" - 18 x 3/4" Hex. Hd. Cap Screw	1	26	PL4716	Transmission Input Pulley	1
5	PL5013	Shoulder Bolt	1	27	Z34004	3/8" Flat Washer	6
6	PL5023	Snap-In Bushing	1	28	Z24012	3/8" - 16 x 1-3/4" Hex. Hd. Cap Screw	2
7	PL4902W	Gear Shift Lever	1	29	PL4909	Idler	2
8	PG771	Grip	1	30	Z30004	3/8" - 16 Flange Nut	2
9	Z30003	5/16" - 18 Flange Nut	6	31	PL4749	#9 Woodruff Key	1
10	Z34002	1/4" Flat Washer	3	32	PL4892	Belt, Transmission (Input)	1
11	Z37002	1/4" Lock Washer	2	33	PL8153	Belt, Traction (Wheel Belt)	2
12	Z14106	1/4" - 28 x 1" Hex. Hd. Cap Screw	1	34	PL0355	Swivel	2
13	PL4882	Upper Gear Selector Rod	1	35	Z34003	5/16" Flat Washer	11
14	PL4908	Grip, Reverse Trigger	1	36	Z49001	Hair Pin	2
15	PL4915	Gear Selector Rod Coupler	1	37	PL8150	Special Washer	1
16	PL4913	Bushing	1	38	Z14003	1/4" - 20 x 5/8" Hex. Hd. Cap Screw	1
17	PL4883	Lower Gear Selector Rod	1	39	Z37004	3/8" Lock Washer	1
18	PL4715	Transmission Output Pulley	2	40	Z40003	Set Screw - 5/16" - 18 x 3/8"	3
19	PL4898WL	Reverse Bellcrank, Left	1	41	Z31003	5/16 - 18 Jam Nut	3
	PL4899WR	Reverse Bellcrank, Right	1	42	Z24004	3/8" - 16 x 3/4" Hex. Hd. Cap Screw	1
20	Z61004	5/16" - 18 x 3/4" Self Tapping Screw	1	43	PC058	Pad	1
21	PL4706W	Transmission Support Bracket	1				
22	PL4900	Bushing, .875 O.D.	2				

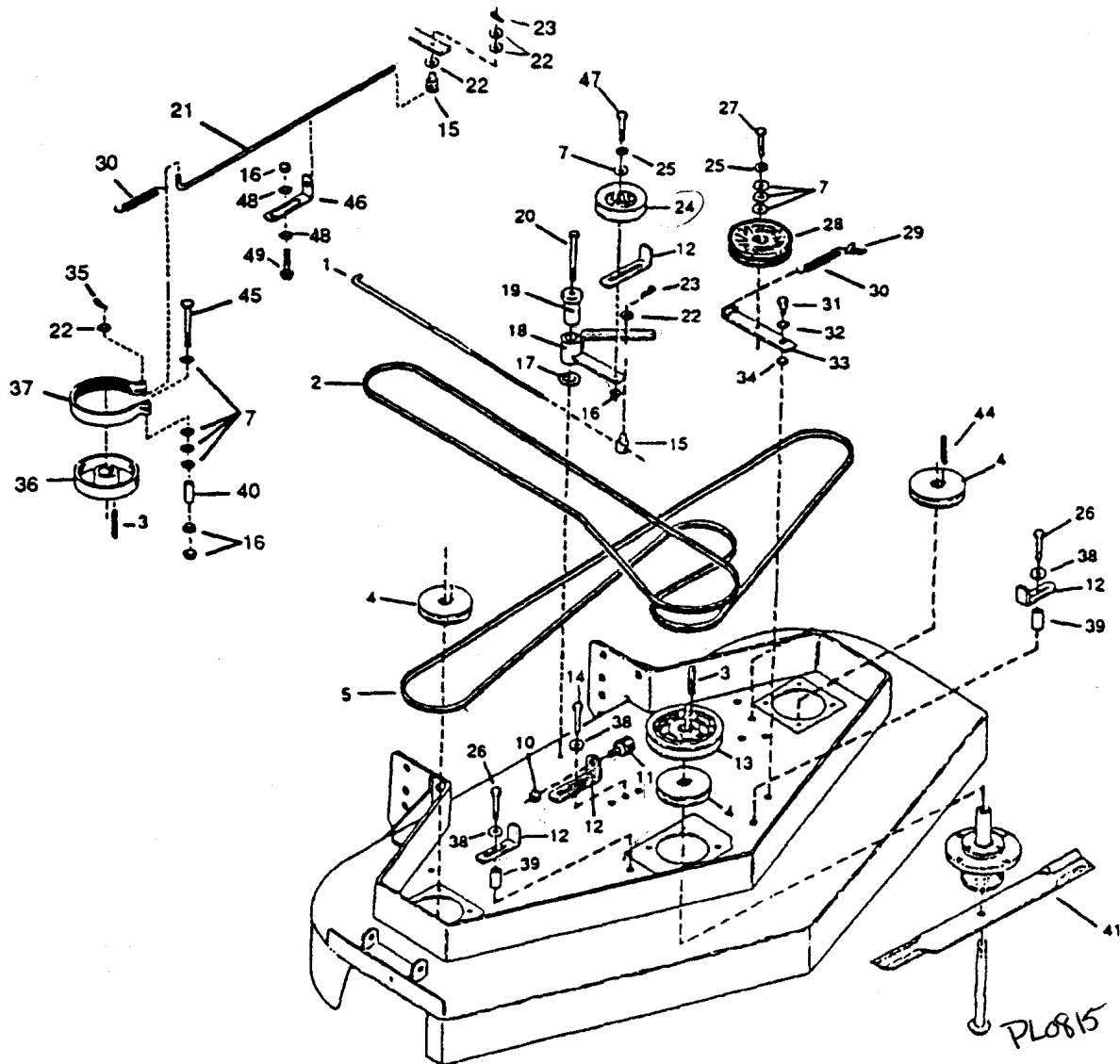
36" BLADE BELT DRIVE SYSTEM



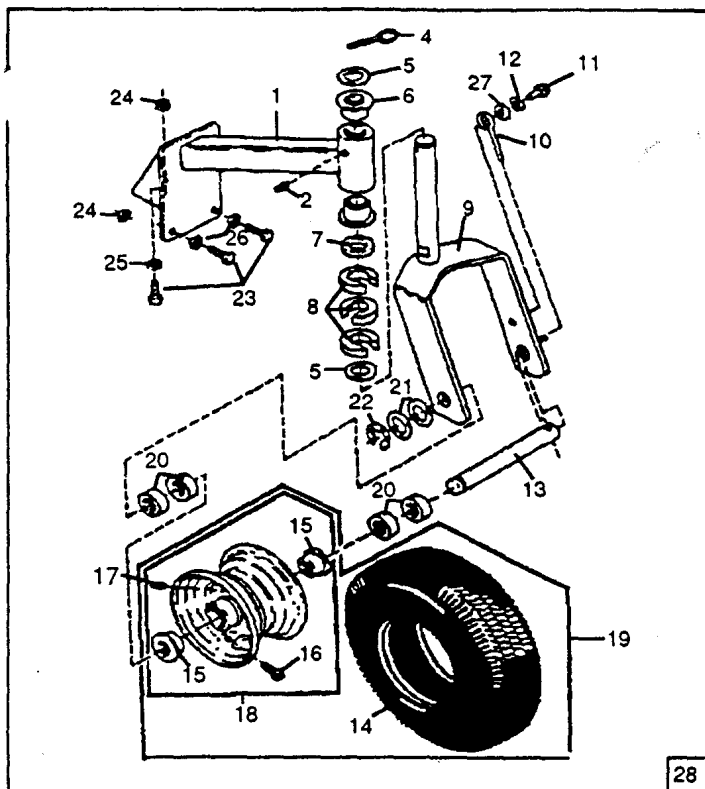
Ref. No.	Part No.	Description	No. Req'd
1	PL6089	Rod, Blade Engagement, 26"	1
2	PL6137	Rod, Blade Brake	1
3	PL0766	Lever	1
4	Z24026	3/8" x 3-1/2" Hex. Hd. Cap Screw	1
5	PL8123	Brake Drum	1
6	Z34004	3/8" Flat Washer	13
7	PL1108	Brake Band	1
8	PL0789	Spacer Tube	2
9	Z24010	3/8" - 16 x 1-1/2" Hex. Hd. Cap Screw	2
10	Z37004	3/8" Spring Lock Washer	2
11	PL0786	Idler Pulley W/Bushing	1
13	PL0779	Beltguide	1
14	PL4513	Belt, Engine - Blade	1
15	Z24022	3/8" - 16 x 3" Hex. Hd. Cap Screw	1
16	PL0769	Pivot Bushing	1
17	P2010	3/8" Large Washer	2
18	PL0355	Swivel	2
19	PL4728W	Idler Arm	1
20	Z35014	1" Machinery Bushing	1
21	Z34003	5/16" Flat Washer	5

Ref. No.	Part No.	Description	No. Req'd
22	Z49001	#13 Hair Pin	4
23	PL1196	Key	2
24	PL0820	Pulley	1
25	PL0822	Pulley	2
26	Z24008	3/8" - 16 x 1-1/4" Hex. Hd. Cap Screw	2
27	PL1125	Beltguide	2
28	PL0400	Spacer	2
29	PL4731	Idler Arm	1
30	PL5023	Snap Bushing	1
31	Z24016	3/8" x 2-1/4" Hex. Hd. Cap Screw	1
32	PL5013	Shoulder Bolt	1
33	PL8098	Spring	1
34	PL0032	Clip	1
35	PM118	Clevis Pin	1
36	Z30004	3/8" - 16 Flange Nut	8
37	PL0643	Belt, Blade - Blade	1
38	PL4206	18" Blade, High-Lift	2
39	PL1105	Spacer Tube	1
40	PL8540A	V-Idler 5"	1
41	PL5031	Belleville Washer	1

48" & 52" BLADE BELT DRIVE SYSTEM

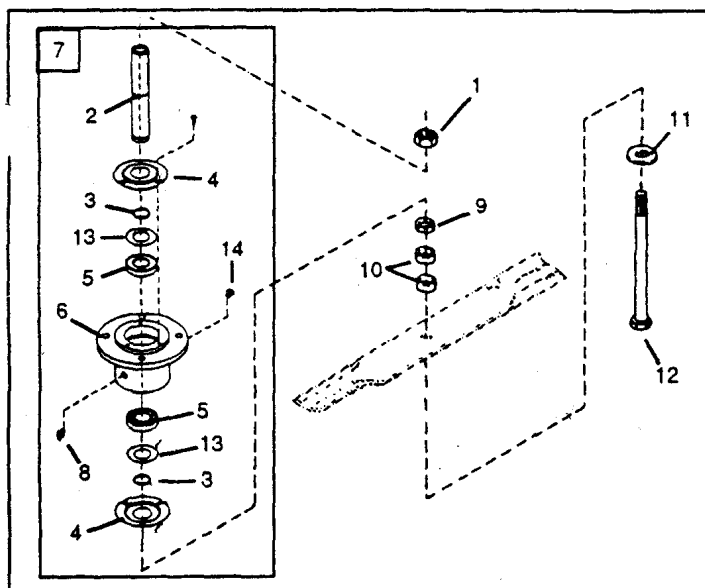


Ref. No.	Part No.	Description	No. Req'd	Ref. No.	Part No.	Description	No. Req'd
1	PL6089	Rod, Blade Engagement	1	26	Z24016	3/8" - 16 x 2-1/4" Hex. Hd. Cap Screw	2
2	PL4732	Belt, Engine - Blade, 48"	1	27	Z24010	3/8" - 16 x 1-1/2" Hex. Hd. Cap Screw	1
	PL4739	Belt, Engine - Blade, 52"	1	28	PL8036A	Idler Pulley W/Bushing	1
3	PL1196	Key	2	29	PL0032	Clip	1
4	PL0822	Pulley	3	30	PL8098	Spring	1
5	PL4734	Belt, Blade - Blade, 48"	1	31	PL5013	Shoulder Bolt	1
	PL4740	Belt, Blade - Blade, 52"	1	32	PL5031	Belleville Washer	1
7	Z34004	3/8" Flat Washer	8	33	PL4731	Idler Arm	1
10	Z30003	5/16" - 18 Flange Nut	1	34	PL5023	Snap Bushing	1
11	PL4586	Bumper, Blade Control Lever	1	35	Z50001	Cotter Pin	1
12	PL0779	Beltguide	4	36	PL8123	Brake Drum	1
13	PL0820	Pulley	1		P0309	Zerk Fitting	1
14	Z24006	3/8" - 16 x 1" Hex. Hd. Cap Screw	2	37	PL1108	Brake Band	1
15	PL0355	Swivel	2	38	P2010	Large Flat Washer	4
16	Z30004	3/8" Flange Nut	8	39	PL4870	Spacer	2
17	Z35014	1" Machinery Bushing	1	40	PL1105	Spacer	1
18	PL6128W	Idler Arm	1	41	PL4205	16-1/2" Blade, High Lift (48" Mower)	3
19	PL0769	Pivot Bushing	1		PL4206	18" Blade, High Lift (52" Mower)	3
20	Z24022	3/8" - 16 x 3" Hex. Hd. Cap Screw	1	44	PL0596	Key, Square, 1/4" x 1"	1
21	PL6122	Rod, Blade Brake	1	45	Z24026	3/8" - 16 x 3-1/2" Hex. Hd. Cap Screw	1
22	Z34003	5/16" Flat Washer	2	46	PL6129	Rod Guide	1
23	Z49001	# 13 Hair Pin Cotter	1	47	Z24012	3/8" - 16 x 1-3/4" Hex. Hd. Cap Screw	1
24	PL0786	Idler Pulley	1	48	Z34004	3/8" Flat Washer	4
25	Z37004	3/8" Spring Lock Washer	2	49	Z24004	3/8" - 16 x 3/4" Hex. Hd. Cap Screw	2



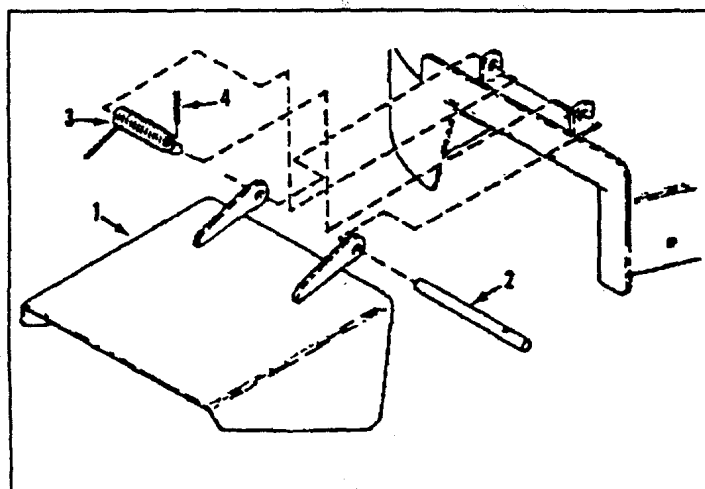
QUICK ADJUST CASTERS

Ref. No.	Part No.	Description	No. Req'd
1	PL8086W	Mount Bracket, Turf Caster	2
2	PL8125	Zerk Fitting	2
4	PM462	Pin, Caster Post	2
5	Z35014	Machinery Bushing, 1"	6
6	PJH1060	Bushing, Caster Tube	4
7	PL8110	Spacer	4
8	PJH1054	Spacer, Caster Tube	8
9	PL7010W	Yoke, Turf Caster	2
10	PL8087	Hook	2
11	Z24006	3/8" - 16 x 1" Hex. Hd. Cap Screw	2
12	Z34004	3/8" Flat Washer	2
13	PL8088	Shaft, Caster Wheel	2
14	PL0958	Tire	2
15	PL0941	Ball Bearing	4
16	P0266	Valve Stem	2
17	PR0909	Zerk Fitting	2
18	PL0959A	Rim Assembly	2
19	PAL0942A	Wheel Assembly, Pneumatic	2
20	PL0417	Spacer	8
21	Z35010	3/4" Machinery Bushing	4
22	PL8138	3/4" E-Ring	2
23	Z19004	5/16" - 18 x 3/4" Hex. Hd. Cap Screw	6
24	Z30003	5/16" - 18 Flange Nut	2
25	Z34003	5/16" Flat Washer	2
26	Z37003	5/16" Lock Washer	4
27	Z37004	3/8" Lock Washer	2
28	PL8084AW	Turf Caster Assembly	2



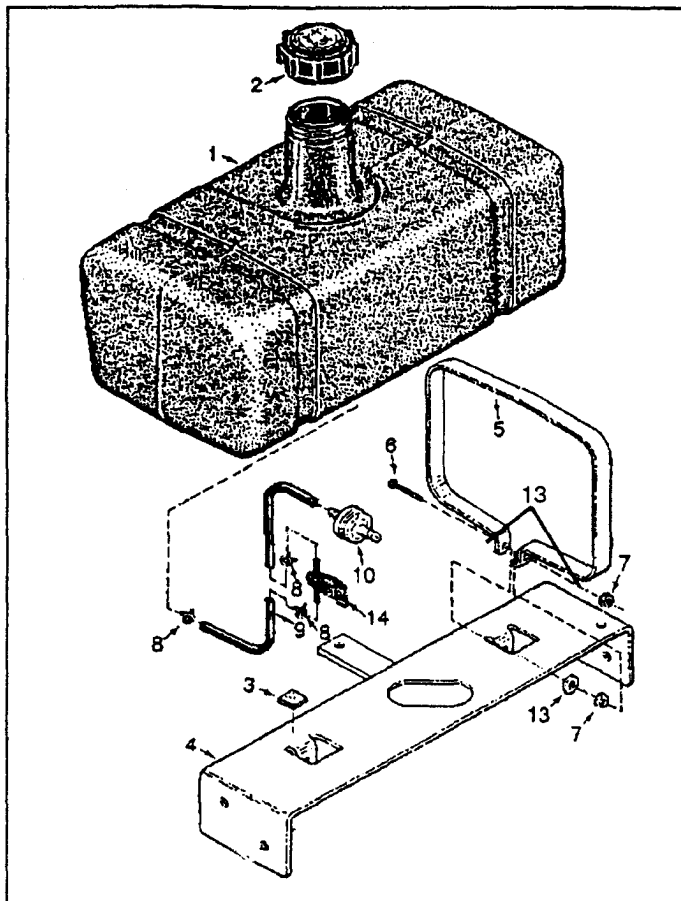
CUTTER HOUSING

Ref. No.	Part No.	Description	No. Req'd
1	Z32010	5/8" - 18 Hexagon Head Nut	1
2	PL6139	Spindle	1
3	P0410	Snap Ring	2
4	PL4608	Cap	2
5	Z13202	10 - 32 x 1/2" Self-Tap. Hex. Hd. Screw	6
6	PL6141	Bearing	2
7	PL6140	Housing, Cutter	1
8	Z24006	3/8" - 16 x 1" Hex. Hd. Cap Screw	4
9	Z30004	3/8" - 16 Flange Nut	4
10	PL6140A	Cutter Housing Assembly	1
11	P0310	Zerk Fitting	1
12	PL0617	1/4" Spacer	1
13	PL0618	1/2" Spacer	2
14	PL0624	Washer, Steel	1
15	PL0815	Blade Bolt W/Nut	1
16	Z30013	Washer	2
17	PL0085	Relief Valve	1



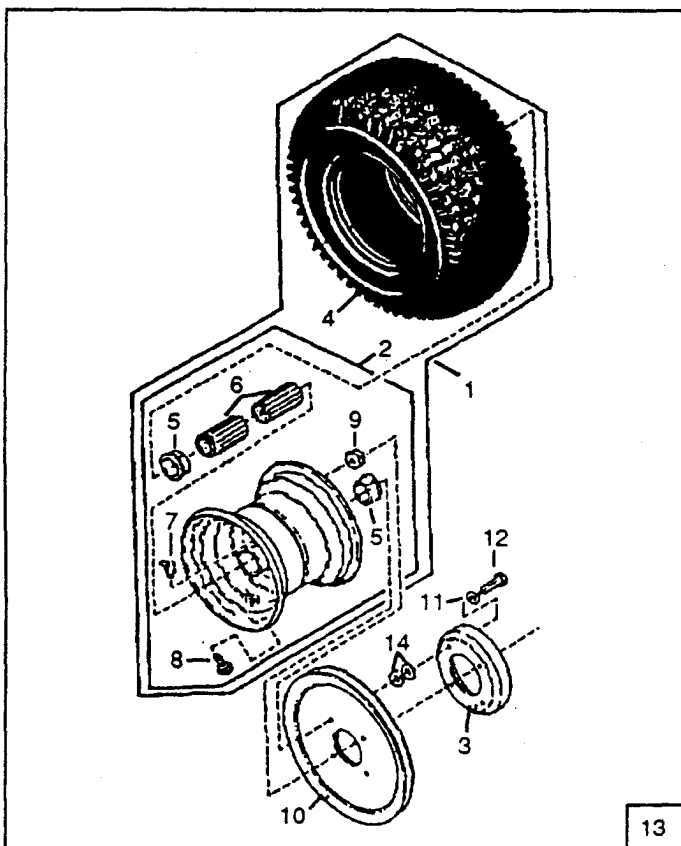
CHUTE DEFLECTOR

Ref. No.	Part No.	Description	No. Req'd
1	PL7017W	Chute Deflector	1
2	PL5322	Shaft, Chute Deflector	1
3	PL4474	Spring, Chute Deflector	1
4	Z44022	3/16" x 1-1/2" Roll Pin	1



FUEL TANK

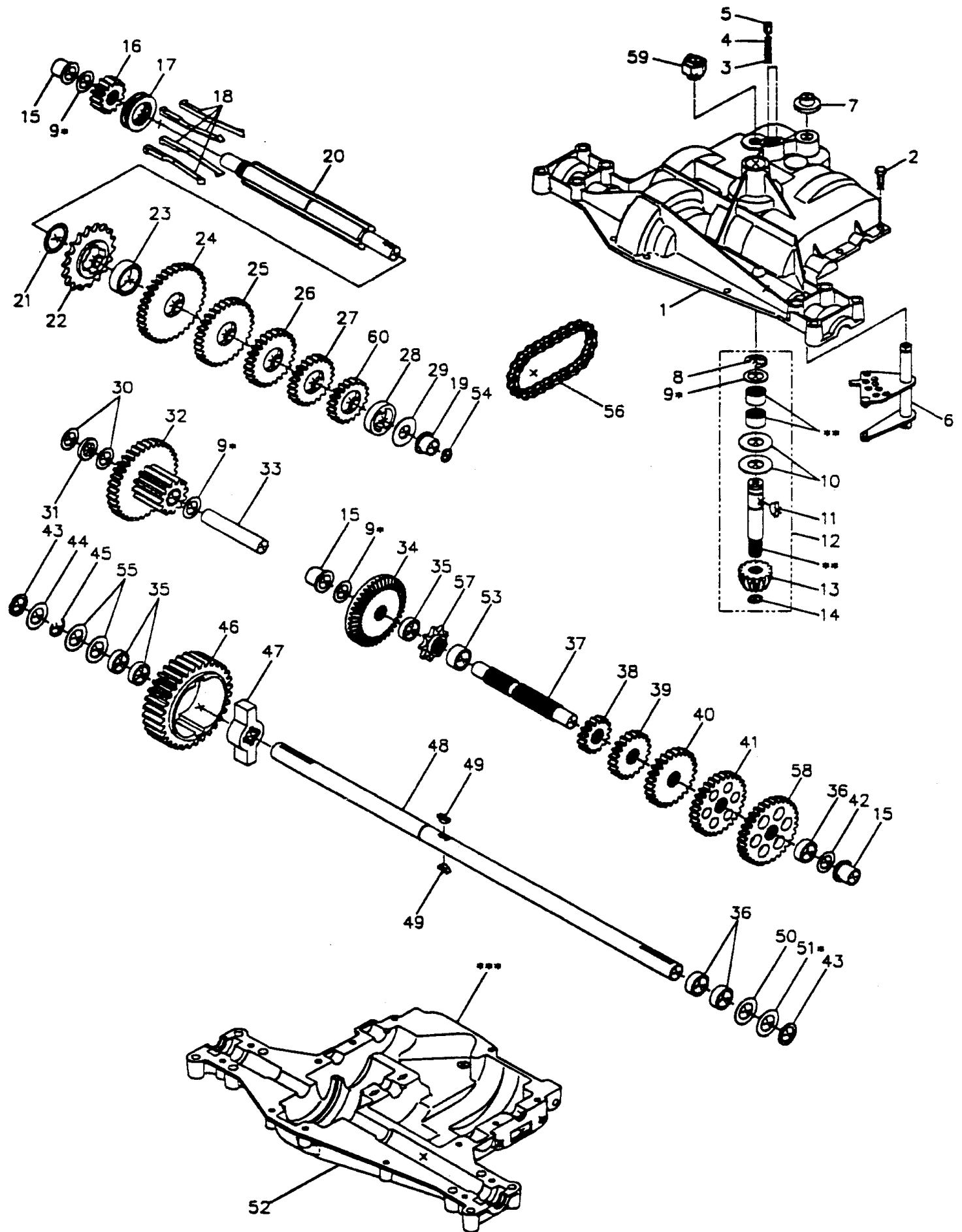
Ref. No.	Part No.	Description	No. Req'd
1	PL8178	Fuel Tank, 4.2 gal.	1
2	PL8122	Fuel Tank Cap	1
3	PC058	Fuel Tank Pad	4
4	PL4912W	Fuel tank Bracket	1
5	PL8034	Fuel Tank Strap	2
6	Z10014	#10 - 24 x 2" Rd. Hd. Mach. Screw	2
7	Z30001	#10 - 24 Lock Washer & Nut	4
8	PL8151	Fuel Line Clamp	6
9	PL4000	24" Fuel Line	1
10	PM244	Fuel Filter	1
13	Z34001	#10 Flat Washer	6
14	PL8179	Fuel Shut-off Valve	1



REAR WHEEL

Ref. No.	Part No.	Description	No. Req'd
1	PL4282A	Wheel Assembly, Pneumatic	2
2	PL4280A	Wheel Assembly <i>old style 13"</i>	2
3	PL4277	Brake Drum	2
4	P0265	Tire, Pneumatic, Tubeless	2
5	P0234	Retainer, Grafoil	4
6	P0267	Bearing, Roller	4
7	P0307	1/4" - 28 Zerk Fitting	2
8	P0266	Stem, Valve	2
9	PL0400	Powered Metal Spacer	8
10	PL8159	Pulley 7"	2
11	Z37003	5/16" Spring Lock Washer	8
12	Z62206	5/16" - 18 x 1-1/2" Self Tapping Bolt	8
13	PL8156AW	Wheel & Hub Assembly, Pneumatic	2
14	P2010	Thick Washer	16

TRANSMISSION



TRANSMISSION

Ref. No.	Part No. Bunton	Description	Dana	No. Req'd
1	PL4835	Housing, Upper	5305E	1
2	PL4759	Screw, Tapping, 1/4" - 20 x .734 LG.	1919	16
3	PL4877	Ball, Detent	5112	2
4	PL4782	Spring, Detent	3626	2
5	PL4779	Screw, Set	3623	2
6	PL4829	Shifter Assembly, Kit	4604	1
7	PL4856	Boot, Shifter	5024	1
8	PL4878	Ring, Retaining	1106	1
9	PL4763	Washer, Plain, .632 x 1.00 x .010	1959	*
	PL4756	Washer, Plain, .632 x 1.00 x .020	1441	*
	PL4744	Washer, Plain, .632 x 1.00 x .060	1145	*
	PL4742	Washer, Plain, .632 x 1.00 x .031	1082	*
	PL4758	Washer, Plain, .632 x 1.00 x .015	1708	*
	PL4741	Washer, Plain, .632 x 1.00 x .041	1068	*
	PL4754	Washer, Plain, .632 x 1.00 x .036	1424	*
	PL4746	Washer, Plain, .632 x 1.00 x .082	1319	*
	PL4752	Washer, Plain, .632 x 1.00 x .026	1423	*
	PL4747	Washer, Plain, .632 x 1.00 x .050	1358	*
	PL4755	Washer, Plain, .632 x 1.00 x .046	1425	*
10	PL4816	Washer, Plain, .632 x 1.38 x .046	3876	2
11	PL4879	Key, Woodruff, #9	1746	1
12	PL4559	Input Shaft Kit Assembly	4559	1
13	PL4778	Pinion, Bevel, 14T	3590	1
14	PL4781	Ring, Retaining	3624	1
15	PL4861	Bearing, Flange	5510	3
16	PL4823	Gear, Spur, 14T	5402	1
17	PL4853	Collar, Clutch	5303	1
18	PL4852	Clutch Key Kit Assembly	4760	1
19	PL4862	Bearing, Flange	5511	1
20	PL4851	Shaft, Intermediate	5404	1
21	PL4783	Ring, Retaining	3627	1
22	PL4832	Spocket, 18T	3830	1
23	PL4805	Spacer, 1.134 x 1.45 x .494	3841	1
24	PL4824	Gear, Spur, 35T	5407	1
25	PL4809	Gear, Spur, 30T	3867	1
26	PL4801	Gear, Spur, 25T	3783	1
27	PL4815	Gear, Spur, 22T	3869	1
28	PL4868	Spacer, 1.133 x 1.50 x .374	5027	1
29	PL4784	Washer, Plain, .640 x 1.37 x .061	3628	1
30	PL4752	Washer, Plain, .632 x 1.00 x .026	1423	2
31	PL4777	Spacer, .630 x 1.00 x .169	3422	1
32	PL4822	Gear, Comb. 12T & 35T Assembly	4286	1
33	PL4818	Shaft, Idler	3967	1
34	PL4834	Gear, Bevel, 42T	5012	1
35	PL4785	Spacer, .781 x 1.00 x .281	3630	3
36	PL4869	Spacer, .781 x 1.00 x .375	3714	3
37	PL4838	Shaft, Drive	5015	1
38	PL4825	Gear, Spur, 15T	5406	1
39	PL4808	Gear, Spur, 20T	3866	1
40	PL4793	Gear, Spur, 25T	3719	1

Ref. No.	Part No. Bunton	Description	Dana	No. Req'd
41	PL4810	Gear, Spur, 28T	3868	1
42	PL4744	Washer, Plain, .632 x 1.00 x .060	1145	1
43	PL4866	Washer, Neoprene	5130	2
44	PL4775	Washer, Plain, .758 x 1.25 x .040	3198	1
45	PL4860	Ring, Retaining	5031	1
46	PL4804	Gear, Spur, 32T	3839	1
47	PL4864	Cross, Axle	5032	1
48	PL4837	Axle	5513	1
49	PL4750	Key, Woodruff, #61	1375	2
50	PL4766	Washer, Plain, .758 x 1.25 x .062	3180	1
51	PL4776	Washer, Plain, .758 x 1.25 x .020	3408	*
	PL4766	Washer, Plain, .758 x 1.25 x .062	3180	*
	PL4775	Washer, Plain, .758 x 1.25 x .040	3198	*
	PL4795	Washer, Plain, .758 x 1.25 x .035	3733	*
	PL4799	Washer, Plain, .758 x 1.12 x .010	3749	*
	PL4767	Washer, Plain, .758 x 1.25 x .031	3184	*
	PL4790	Washer, Plain, .758 x 1.25 x .015	3652	*
	PL4794	Washer, Plain, .758 x 1.25 x .025	3732	*
	PL4797	Washer, Plain, .758 x 1.25 x .050	3735	*
	PL4798	Washer, Plain, .758 x 1.25 x .055	3736	*
	PL4796	Washer, Plain, .758 x 1.25 x .045	3734	*
52	PL4836	Housing, Lower	5304E	1
53	PL4854	Spacer, .781 x 1.00 x .494	5016	1
54	PL4863	Seal, Oil	5508	1
55	PL4796	Washer, Plain, .758 x 1.25 x .045	3734	2
56	PL4831	Chain, 24 Pitches	3625	1
57	PL4833	Sprocket, 9T	3645	1
58	PL4827	Gear, Spur, 31T	3683	1
59	PL8033	Switch, Neutral	5267	1
60	PL4828	Gear, Spur, 19T	5202	1
61	PL4826	Grease	4300	1

Note: * Used in various combinations to maintain proper clearances.

** Items available with Reference No. 12 Only.

DECAL KITS

Part No.	Description
PT - 54	Gear Drive Handle/ Rear Power Deck
PT - 45 PT - 46 PT - 47	36" Gear Drive Front Cutting Deck 48" Gear Drive Front Cutting Deck 52" Gear Drive Front Cutting Deck