
Bolens®

FRONT END LOADER

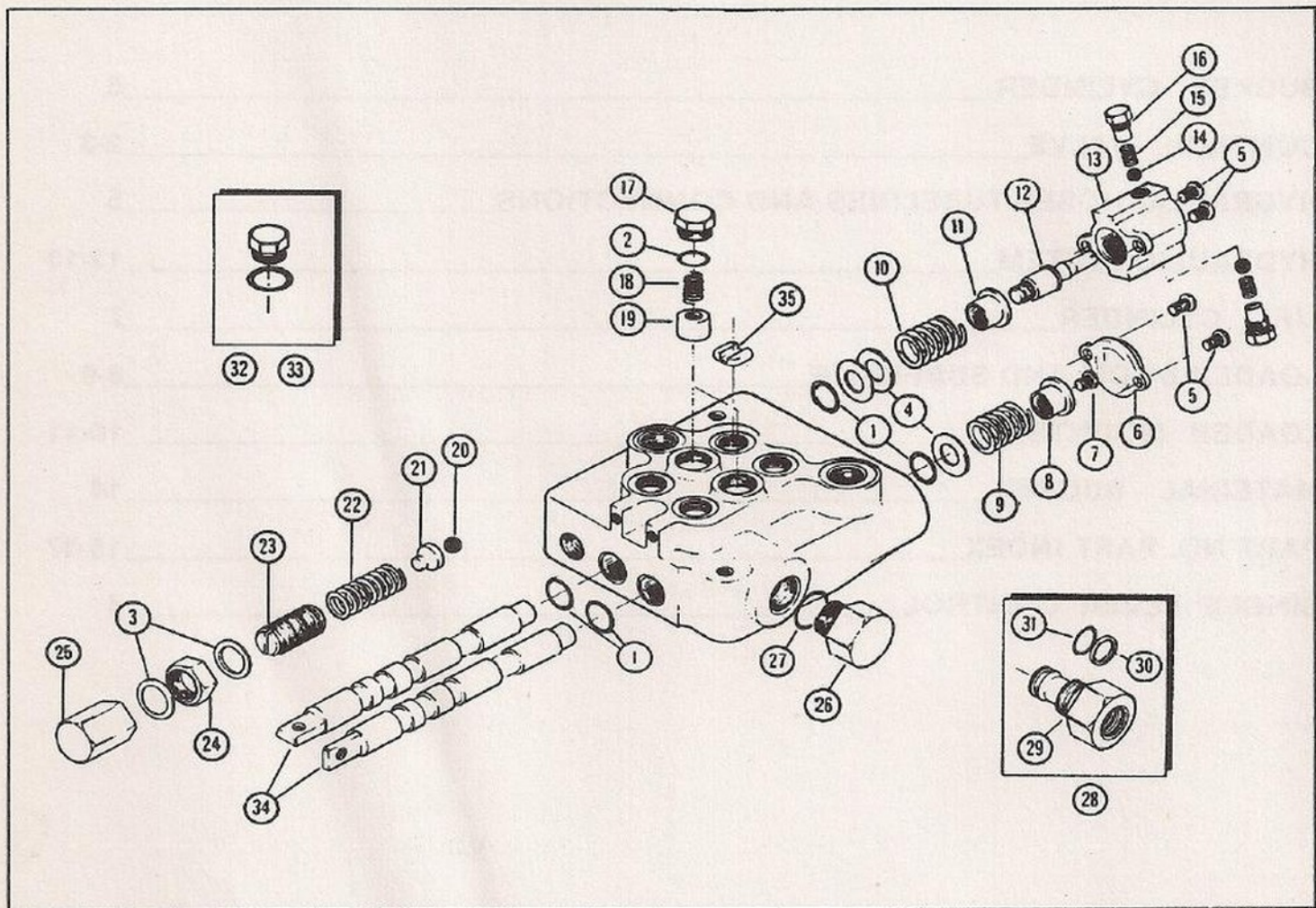
Model 51611

PARTS LIST

ALPHABETICAL INDEX

BUCKET CYLINDER	6
CONTROL VALVE	2-3
HYDRAULIC HOSES TUBELINES AND CONNECTIONS	5
HYDRAULIC SYSTEM	12-13
LIFT CYLINDER	7
LOADER BOOM AND SUBFRAME	8-9
LOADER MOUNTS	10-11
MATERIAL BUCKET	14
PART NO. PART INDEX	15-17
SINGLE LEVER CONTROL	4

CONTROL VALVE



Item	Part No.	Qty.	Description
	1814163		HYDRAULIC VALVE ASSEMBLY
	1814001	1	Seal Repair Kit (includes 1,2,3)
1		4	O Ring
2		2	O Ring
3		2	Gasket
	1814002	1	Spring Centering Kit (includes 4,5,6,7,8,9)
4		3	Washer
5		4	Screw w/Lockwasher
6		1	End Cap
7		1	Screw
8		1	Spacer
9		1	Return Spring

CONTROL VALVE

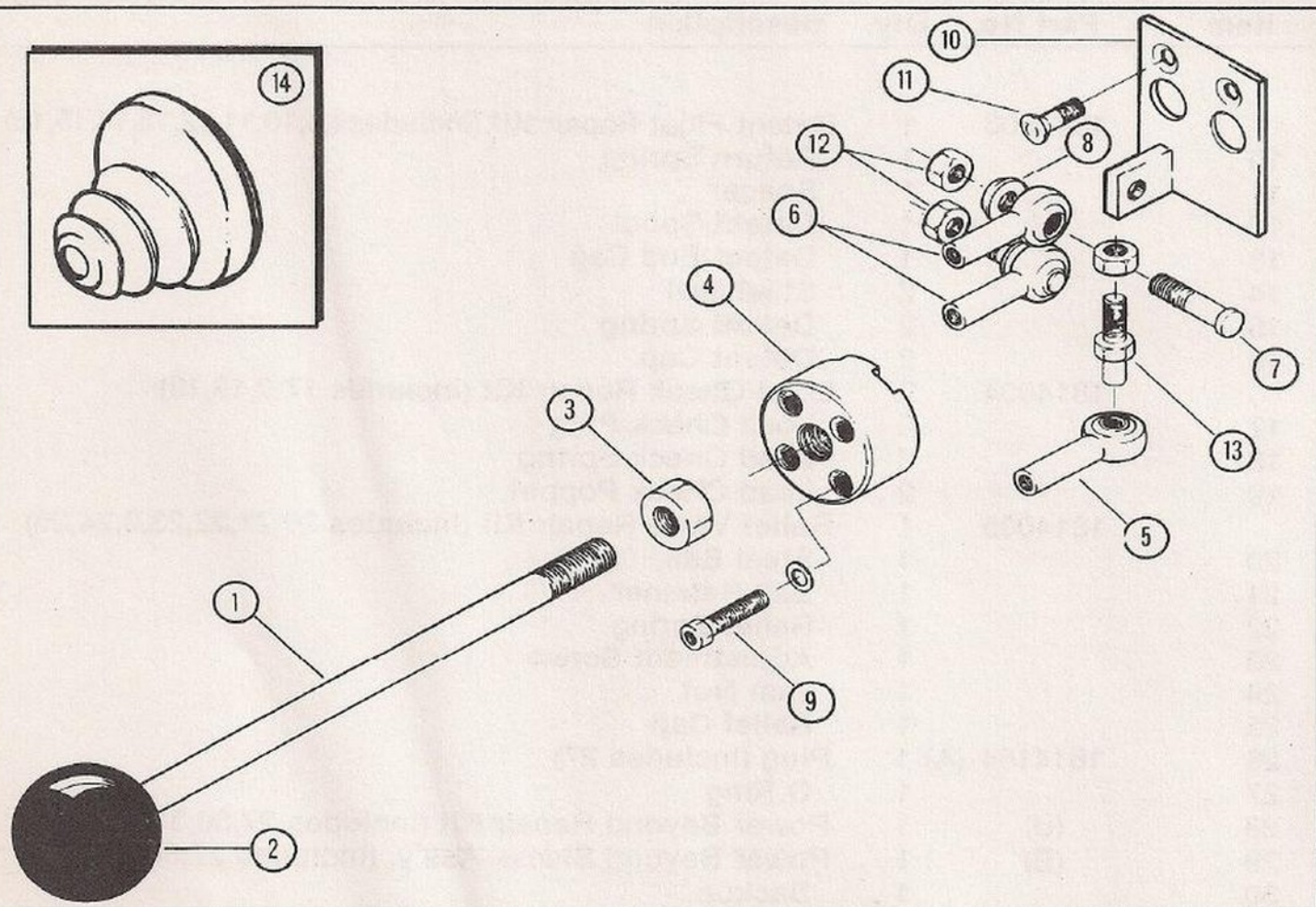
Item	Part No.	Qty.	Description
	1814003	1	Detent Float Repair Kit (includes 4,5,10,11,12,13,14,15,16)
10		1	Return Spring
11		1	Spacer
12		1	Detent Spool
13		1	Detent End Cap
14		2	Steel Ball
15		2	Detent Spring
16		2	Detent Cap
	1814004	2	Load Check Repair Kit (includes 17,18,19)
17		2	Load Check Plug
18		2	Load Check Spring
19		2	Load Check Poppet
	1814005	1	Relief Valve Repair Kit (includes 20,21,22,23,24,25)
20		1	Steel Ball
21		1	Ball Retainer
22		1	Relief Spring
23		1	Adjustment Screw
24		1	Jam Nut
25		1	Relief Cap
26	1814164 (A)	1	Plug (includes 27)
27		1	O Ring
28	(B)	1	Power Beyond Repair Kit (includes 27,30,31)
29	(B)	1	Power Beyond Sleeve Ass'y. (includes 27,30,31)
30		1	Backup
31		1	O Ring
32	(C)	2	Plug 9/16" MORB (includes O Ring)
33	(C)	2	Plug 3/4" MORB (includes O Ring)
34		2	Spool (order Valve Assy.)
35	1814007 (C)	1	Orifice Plate

(A) For use with Loaders not equipped with power beyond hydraulics.

(B) For use with Loaders equipped with power beyond hydraulics.

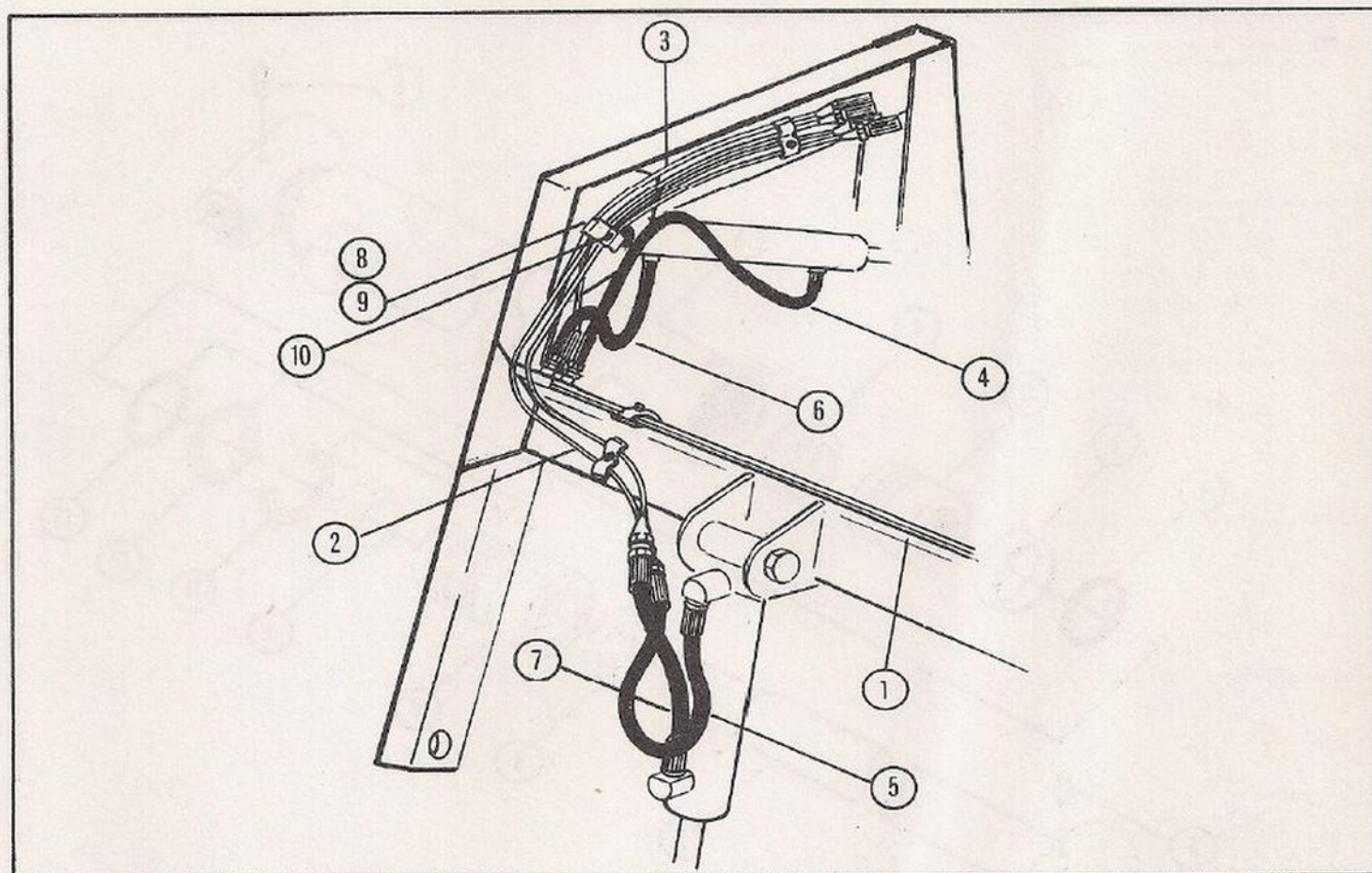
(C) Order as required.

SINGLE LEVER CONTROL



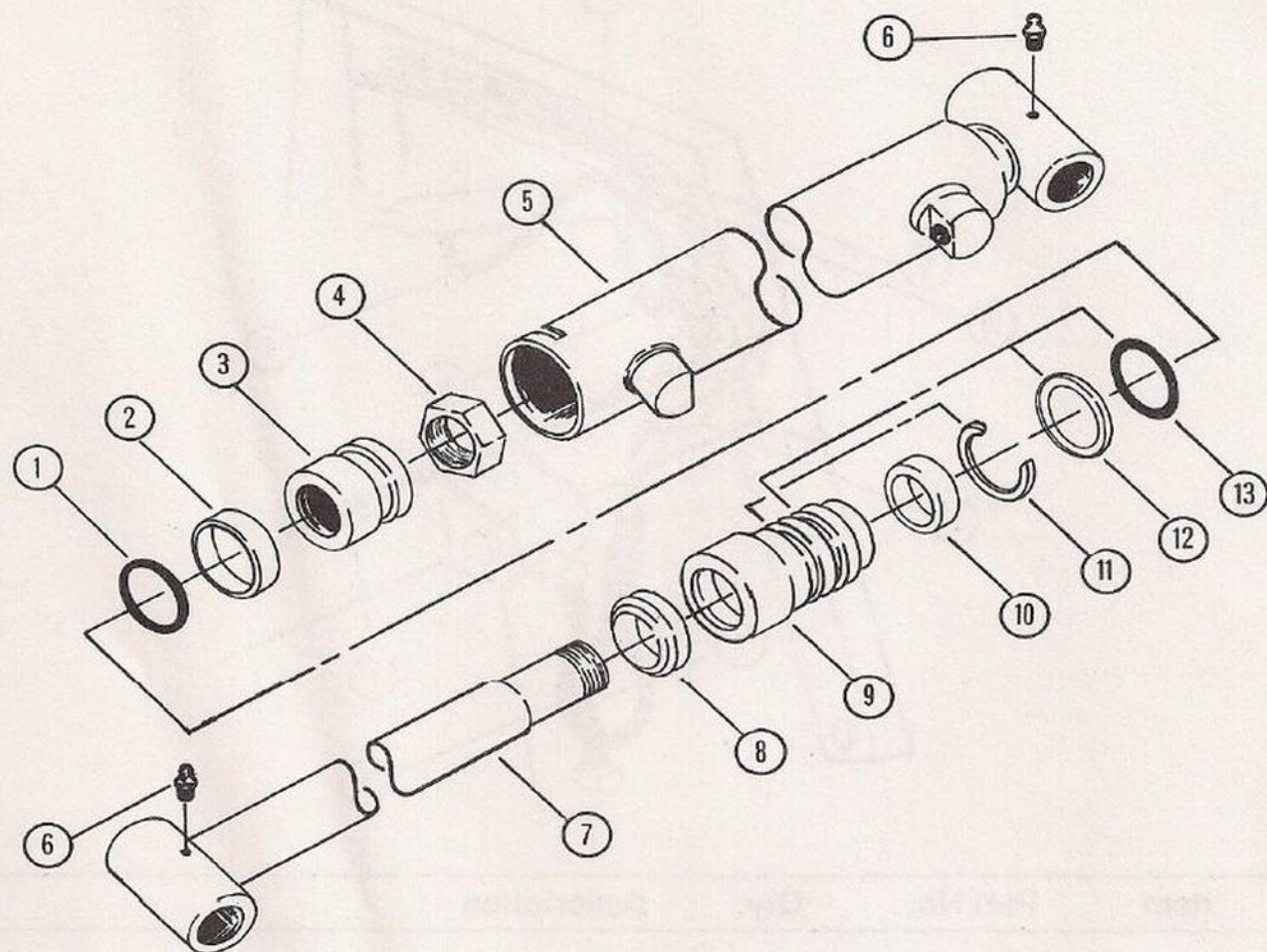
Item	Part No.	Qty.	Description
1	1814165	1	Handle
2	1814166	1	Knob
3	1814167	1	Nut
4	1814168	1	Handle Adaptor
5	1814169	1	Rod End
6	1814170	2	Rod End
7	1814171	2	Bolt
8	1814172	2	Spacer
9	1814173	3	Capscrew
10	1814174	1	Adaptor Assembly
11	1814175	2	Capscrew
12	1814176	3	Nut
13	1814177	1	Stud
14	1814178	1	Cover

HYDRAULIC HOSES, TUBELINES AND CONNECTIONS



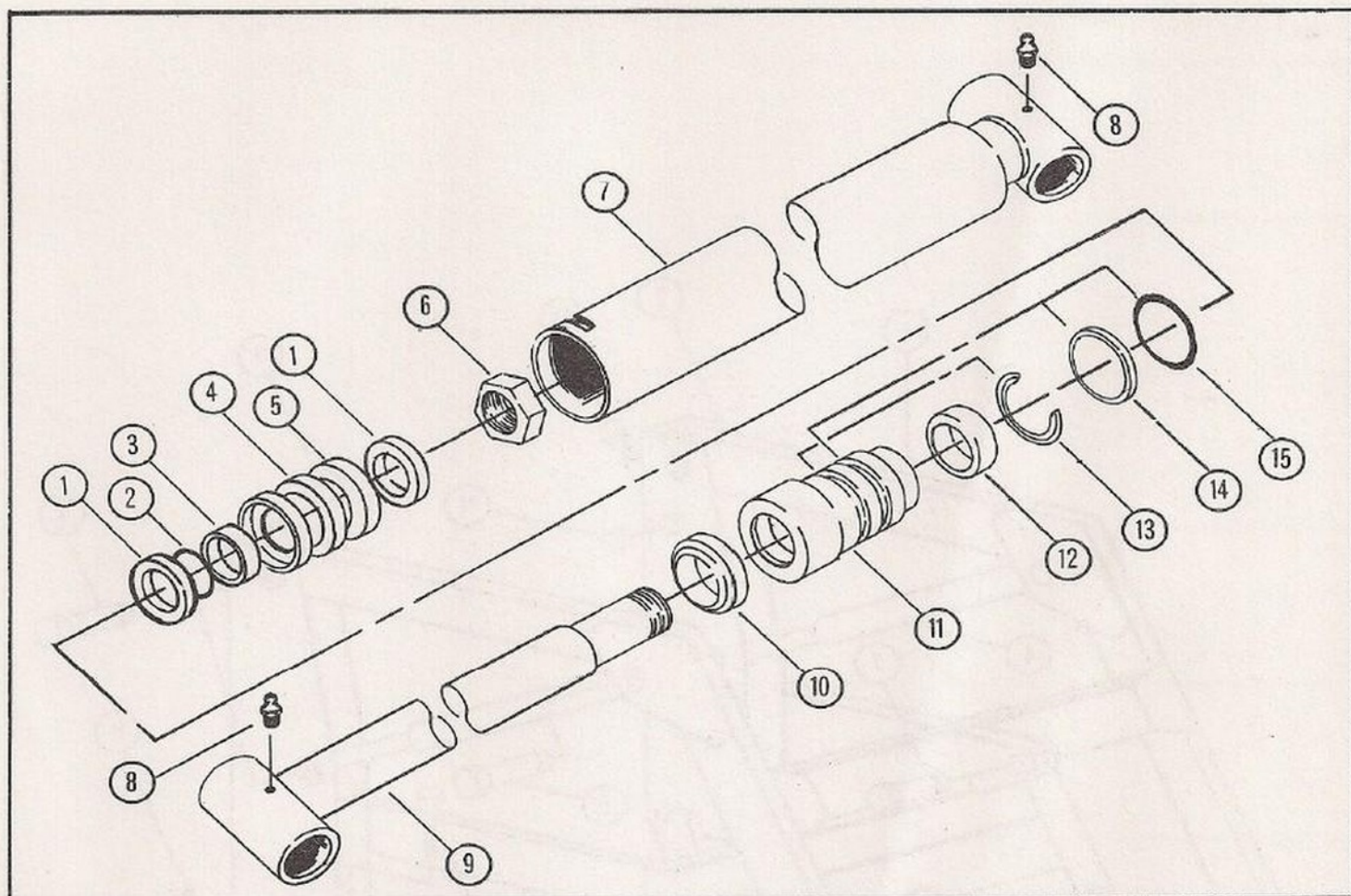
Item	Part No.	Qty.	Description
1	1814227	2	Tubeline - Front
2	1814153	2	Tubeline - Rear (37" Lg.)
3	1814228	2	Tubeline - Rear (27" Lg.)
4	1814229	2	1/4" - 24" Hyd. Hose - 9/16" SAE MORB - 180 - 9/16" JICFS - 180
5	1814230	1	1/4" - 18" Hyd. Hose - 9/16" SAE MORB - 180 - 9/16" JICM - 180
6	1814110	2	1/4" - 15" Hyd. Hose - 9/16" SAE MORB - 180 - 9/16" JICFS - 180
7	1814231	1	1/4" - 15" Hyd. Hose - 9/16" SAE MORB - 180 - 9/16" JICM - 180
8	1814085	5	Tubeline Clip
9	1814179	3	Pad
10	(A)	5	Hex Nut - 5/16" - 18
	(A)		Procure Locally (Grade 5 Hardware)

BUCKET CYLINDER



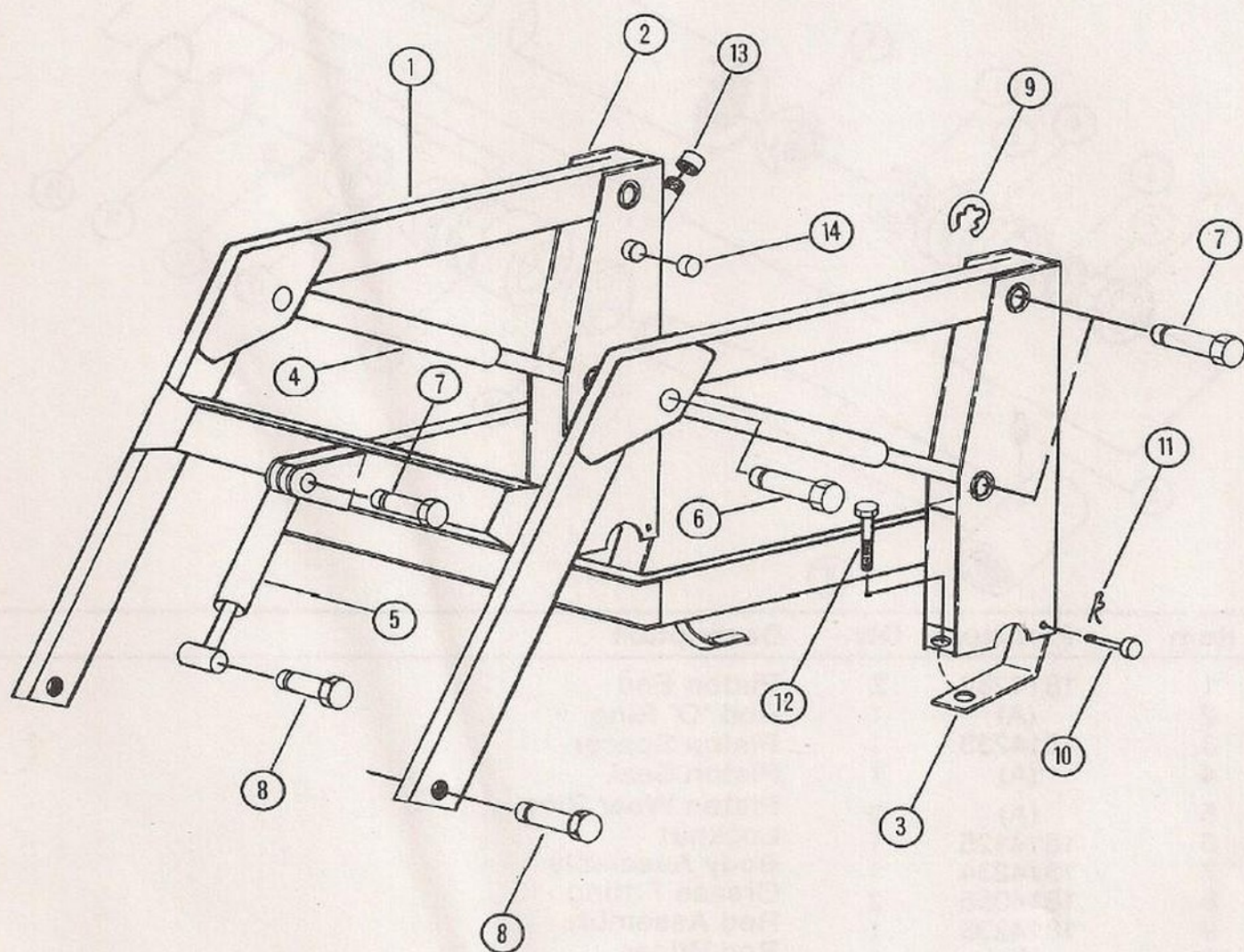
Item	Part No.	Qty.	Description
1	(A)	1	Rod 'O' Ring
2	(A)	1	Piston Seal
3	1814238	1	Piston
4	1814239	1	Locknut
5	1814240	1	Body Assembly
6	1814055	2	Grease Fitting
7	1814241	1	Rod Assembly
8	(A)	1	Rod Wiper
9	1814242	1	Gland
10	(A)	1	Rod Seal
11	(A)	1	Retaining Wire
12	(A)	1	Gland Backup
13	(A)	1	Gland 'O' Ring
	(A)		Order Seal Repair Kit 1814237

LIFT CYLINDER



Item	Part No.	Qty.	Description
1	1814232	2	Piston End
2	(A)	1	Rod 'O' Ring
3	1814233	1	Piston Spacer
4	(A)	1	Piston Seal
5	(A)	2	Piston Wear Ring
6	1814125	1	Locknut
7	1814234	1	Body Assembly
8	1814055	2	Grease Fitting
9	1814235	1	Rod Assembly
10	(A)	1	Rod Wiper
11	1814236	1	Gland
12	(A)	1	Rod Seal
13	(A)	1	Retaining Wire
14	(A)	1	Gland Backup
15	(A)	1	Gland 'O' Ring
	(A)		Order Seal Repair Kit 1814243

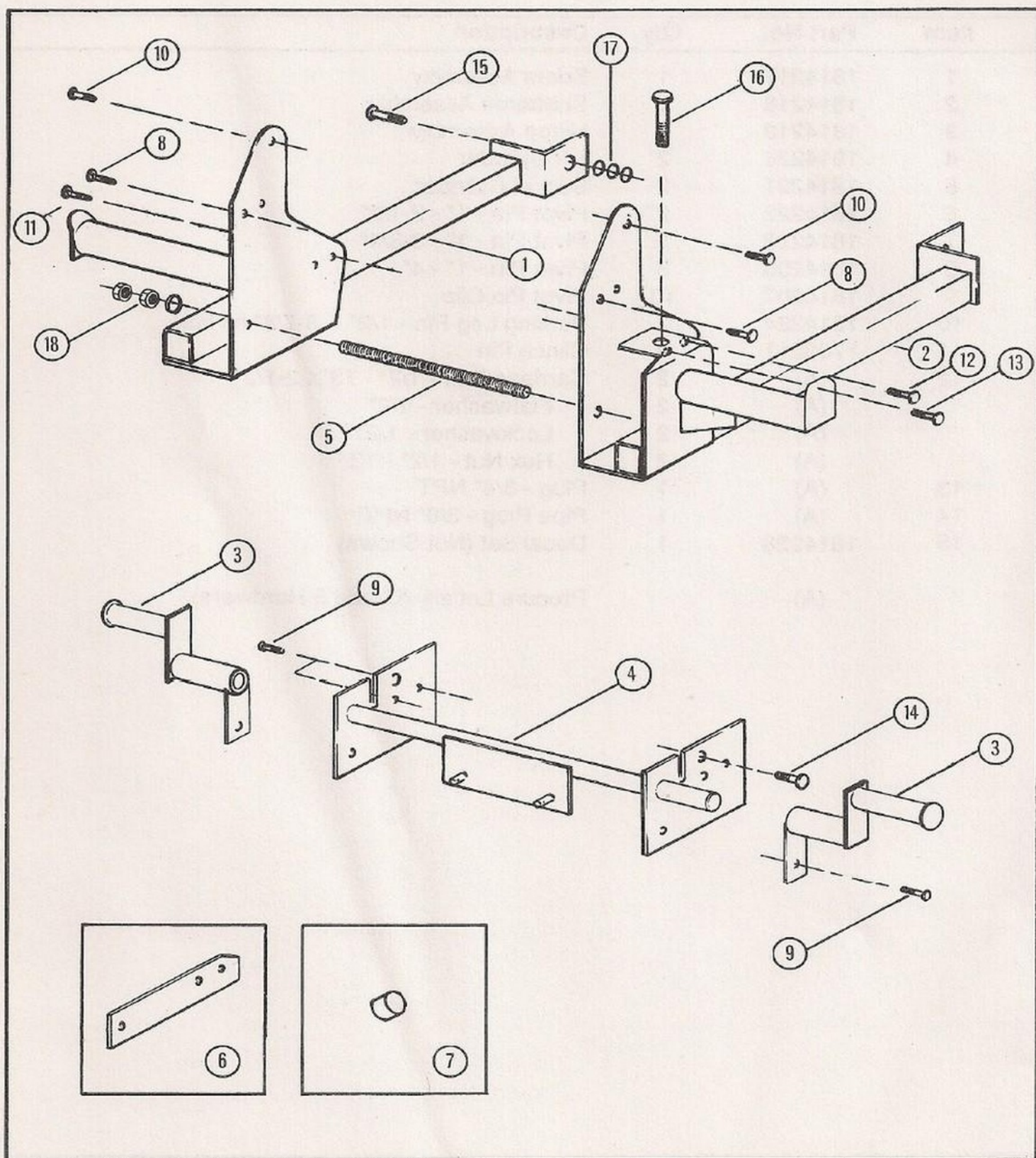
LOADER BOOM AND SUBFRAME



LOADER BOOM AND SUBFRAME

Item	Part No.	Qty.	Description
1	1814217	1	Boom Assembly
2	1814218	2	Subframe Assembly
3	1814219	2	Hinge Assembly
4	1814220	2	Lift Cylinder
5	1814221	2	Bucket Cylinder
6	1814222	2	Pivot Pin - 1" - 2-1/2"
7	1814223	5	Pivot Pin - 1" - 3-3/4"
8	1814206	3	Pivot Pin - 1" - 4"
9	1814207	10	Pivot Pin Clip
10	1814224	2	Parking Leg Pin - 1/2" X 3-7/8" c/l hole
11	1703011	2	Clinch Pin
12	(A)	2	Carriage Bolt - 1/2" - 13 X 2-1/2"
	(A)	2	Flatwasher - 1/2"
	(A)	2	Lockwasher - 1/2"
	(A)	2	Hex Nut - 1/2" - 13
13	(A)	1	Plug - 3/4" NPT
14	(A)	1	Pipe Plug - 3/8" NPT
15	1814226	1	Decal Set (Not Shown)
	(A)		Procure Locally (Grade 5 Hardware)

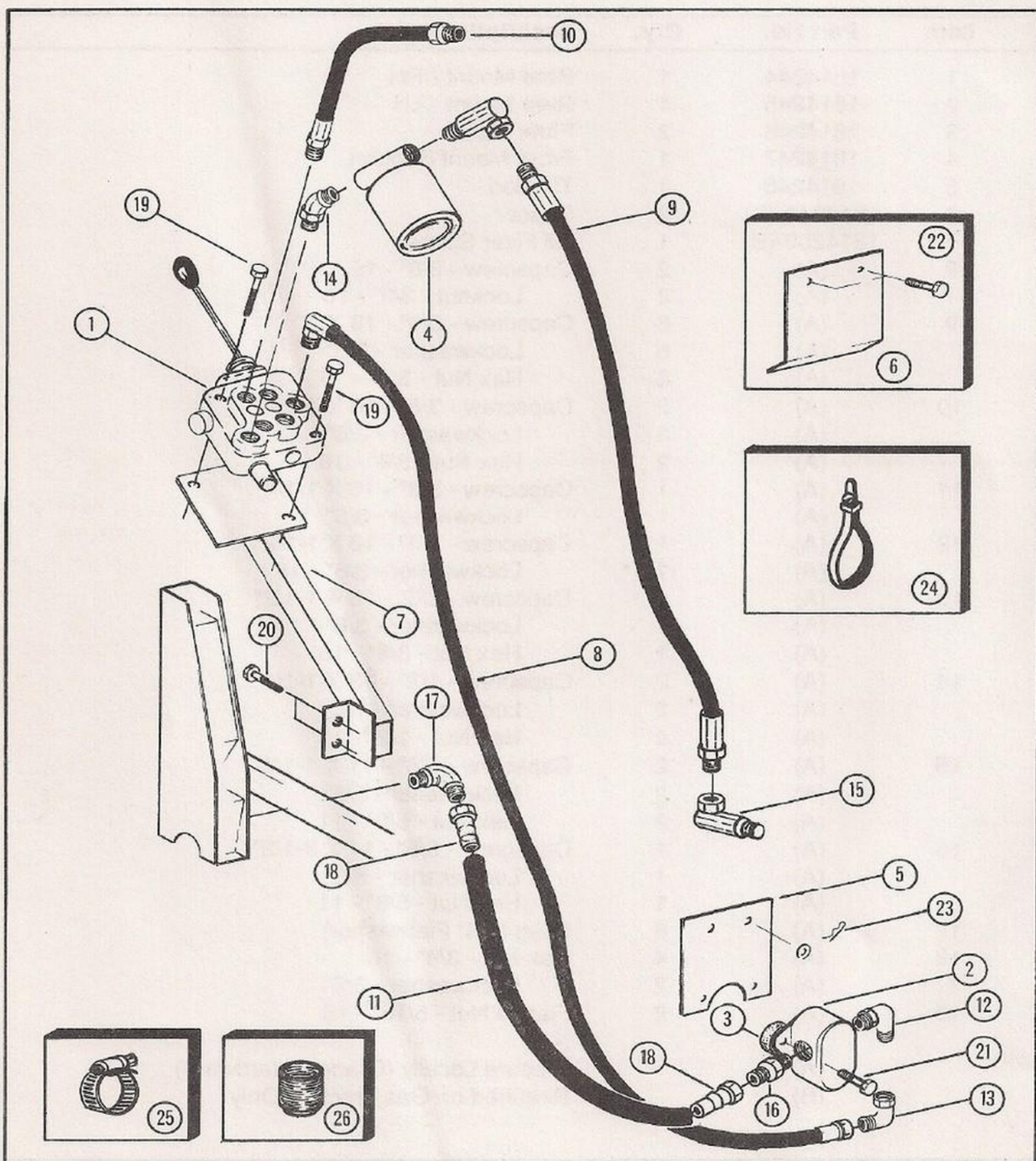
LOADER MOUNTS



LOADER MOUNTS

Item	Part No.	Qty.	Description
1	1814244	1	Rear Mount - RH
2	1814245	1	Rear Mount - LH
3	1814246	2	Front Mount
4	1814247	1	Front Mount Support
5	1814248	1	Tie Rod
6	1814249-(B)	2	Spacer
7	1814250-(B)	1	Oil Filter Spacer
8	(A)	2	Capscrew - 3/8" - 16 X 1"
	(A)	2	Locknut - 3/8" - 16
9	(A)	6	Capscrew - 3/8" - 16 X 1"
	(A)	6	Lockwasher - 3/8"
	(A)	6	Hex Nut - 3/8" - 16
10	(A)	2	Capscrew - 3/8" - 16 X 1-1/4"
	(A)	2	Lockwasher - 3/8"
	(A)	2	Hex Nut - 3/8" - 16
11	(A)	1	Capscrew - 3/8" - 16 X 1-1/4"
	(A)	1	Lockwasher - 3/8"
12	(A)	1	Capscrew - 3/8" - 16 X 1-1/2"
	(A)	1	Lockwasher - 3/8" - 16
13	(A)	1	Capscrew - 3/8" - 16 X 1-1/2"
	(A)	1	Lockwasher - 3/8"
	(A)	1	Hex Nut - 3/8" - 16
14	(A)	2	Capscrew - 1/2" - 13 X 1-1/4"
	(A)	2	Lockwasher - 1/2"
	(A)	2	Hex Nut - 1/2" - 13
15	(A)	2	Capscrew - 5/8" - 11 X 1-1/2"
	(A)	2	Lockwasher - 5/8"
	(A)	2	Hex Nut - 5/8" - 11
16	(A)	1	Capscrew - 5/8" - 11 X 3-1/2"
	(A)	1	Lockwasher - 5/8"
	(A)	1	Hex Nut - 5/8" - 11
17	(A)	6	Shim (5/8" Flatwasher)
18	(A)	4	Hex Nut - 3/8" - 16
	(A)	2	Lockwasher - 3/8"
19	(A)	2	Flange Nut - 5/16" - 18
	(A)		Procure Locally (Grade 5 Hardware)
	(B)		Required on Gas Tractors Only

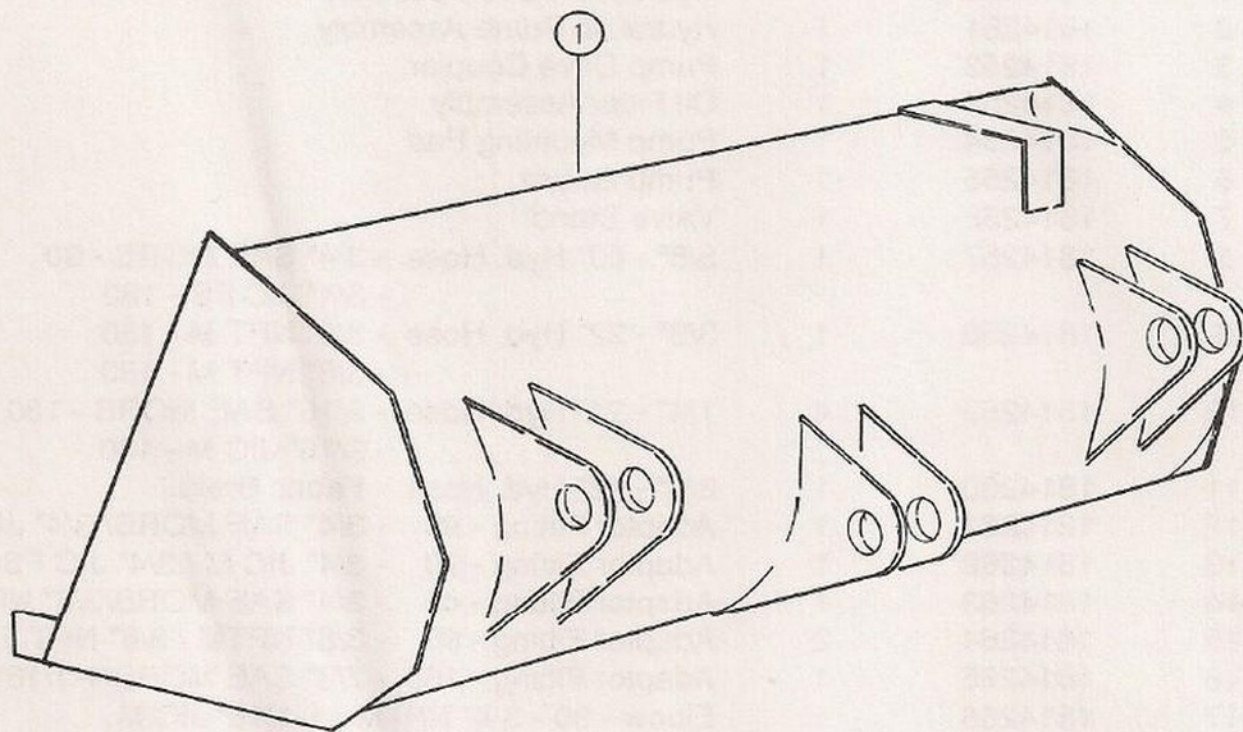
HYDRAULIC SYSTEM



HYDRAULIC SYSTEM

Item	Part No.	Qty.	Description
1	1814163	1	Hydraulic Valve Assembly
2	1814251	1	Hydraulic Pump Assembly
3	1814252	1	Pump Drive Coupler
4	1814253	1	Oil Filter Assembly
5	1814254	1	Pump Mounting Pad
6	1814255	1	Pump Guard
7	1814256	1	Valve Stand
8	1814257	1	3/8" - 60" Hyd. Hose - 3/4" SAE MORB - 90 - 3/4" JIC FS - 180
9	1814258	1	3/8" - 22" Hyd. Hose - 3/8" NPT M - 180 - 3/8" NPT M - 180
10	1814259	4	1/4" - 20" Hyd. Hose - 9/16" SAE MORB - 180 - 9/16" JIC M - 180
11	1814260	1	3/4" - 42" Hyd. Hose - Fabric Braid
12	1814261	1	Adaptor Fitting - 90 - 3/4" SAE MORB/ 3/4" JIC M
13	1814262	1	Adaptor Fitting - 90 - 3/4" JIC M / 3/4" JIC FS
14	1814263	1	Adaptor Fitting - 45 - 3/4" SAE MORB/3/8" NPTM
15	1814264	2	Adaptor Fitting - 90 - 3/8" NPTM / 3/8" NPT FS
16	1814265	1	Adaptor Fitting - 180 - 7/8" SAE MORB/1-1/16" JICM
17	1814266	1	Elbow - 90 - 3/4" NPTM / 1-1/16" JIC M
18	1814267	2	Push-On Hose End - 180 - 1-1/16" JIC FS / 3/4" Barbed
19	(A)	2	Capscrew - 1/4" - 20 X 2"
	(A)	2	Lockwasher - 1/4"
	(A)	2	Hex Nut - 1/4" - 20
20	(A)	2	Capscrew - 3/8" - 16 X 1-1/4
	(A)	2	Lockwasher - 3/8"
	(A)	2	Hex Nut - 3/8" - 16
21	(A)	2	Capscrew - 3/8" - 16 X 1-1/2"
	(A)	2	Flatwasher - 3/8"
	(A)	2	Locknut - 3/8" - 16
22	(A)	2	Capscrew - 1/2" - 13 X 2"
	(A)	2	Hex Nut - 1/2" - 13
23	1703011	2	Clinch Pin
	(A)	2	Flatwasher - 1/2"
24	(A)	2	Plastic Tie Strap
25	(A)	2	Hose Clamp - No. 12
26	(A)	1	Set Screw - 10 - 24 X 3/8"
27	1814268	1	Single Lever Control
	(A)		Procure Locally (Grade 5 Hardware)

MATERIAL BUCKET



Item	Part No.	Qty.	Description
1	(A)		Material Bucket - 40"
	(A)		Not Available through Repair Parts
	(A)		Order through Wholegoods

PART NO. PAGE INDEX

PART NO.	PAGE NO.	PART NO.	PAGE NO.
1703011	9, 13	1814217	9
1814001	2	1814218	9
1814002	2	1814219	9
1814003	3	1814220	9
1814004	3	1814221	9
1814005	3	1814222	9
1814007	3	1814223	9
1814055	6, 7	1814224	9
1814085	5	1814225	9
1814110	5	1814226	9
1814125	7	1814227	5
1814153	5	1814228	5
1814163	2, 13	1814229	5
1814164	3	1814230	5
1814165	4	1814231	5
1814166	4	1814232	7
1814167	4	1814233	7
1814168	4	1814234	7
1814169	4	1814235	7
1814170	4	1814236	7
1814171	4	1814238	6
1814172	4	1814239	6
1814173	4	1814240	6
1814174	4	1814241	6
1814175	4	1814242	6
1814176	4	1814244	11
1814177	4	1814245	11
1814178	4	1814246	11
1814179	5	1814247	11
1814206	9	1814248	11
1814207	9	1814249	11

PART NO. PAGE INDEX

PART NO.	PAGE NO.
1814250	11
1814251	13
1814252	13
1814253	13
1814254	13
1814255	13
1814256	13
1814257	13
1814258	13
1814259	13
1814260	13
1814261	13
1814262	13
1814263	13
1814264	13
1814265	13
1814266	13
1814267	13
1814268	13

PART NO. PAGE INDEX

